

GOwin

In the DX game there are four pathways to that precious QSL:

- via the bureau
- electronically (via e-mail or an online service)
- directly
- through a QSL manager

DX stations will usually pass along their QSL information on the air, but in the frenzy of a pileup those details are often neglected. As you bask in the glow of your pleasure at working yet another DXCC entity, you suddenly realize that you don't know where to send your QSL. Now what?

You can search a call sign database for a clue, or hope that some kind soul will post the information on the DX cluster. Or you can double click on the *GOwin* icon on your PC desktop and have the information in a matter of seconds.

GOwin

The GOList, currently owned by John Shelton, K1XN, has been the bible of QSL information. With *GOwin* you can enjoy the power of the GOList at your own computer. It's as easy as typing in the call sign that you wish to look up (Figure 1). *GOwin* instantly zips through its DX QSL database. With my 1.8-GHz PC, *GOwin* produced results so quickly that the information was on the screen before my fingers lifted from the keyboard.

Written by Tom Dandrea, N3EQF, *GOwin* is compatible with *Windows 95* and up and loads in a heartbeat. It also interfaces with QRZ, RAC and Buckmaster call sign directories for address lookup. *GOwin* is powered by the Golist database files. The files are updated and available to subscribers *weekly* from the Golist Web site. These same database files are used by these other DXing programs: *WIN-EQF*, *DX4WIN*, *SWISSLOG*, *DXBASE*, *WINLOG32*, *LOG WINDOWS*, *LOG-PLUS*, *LOGGER32*, *DX TELNET* and *TRX-MANAGER*.

GOwin can interface with the "Buckmaster HamCall," "Radio Amateur Callbook" or "QRZ! Ham Radio" call sign databases to provide you with mailing address information. To prepare *GOwin* to do this, you simply specify which call sign database you want to use, and the disk drive (or CD-ROM drive) where it is located.

"Output" to a Text File

GOwin provides a way to send all the information displayed to a text file, where you can edit, print and save as needed. The OUTPUT button on *GOwin* will become available as soon as there is any information displayed in the QSL Manager window. When you click on OUTPUT, *GOwin* will create a text file called LABEL.TXT, and display it in your favorite editor. From there, you can "Save As" to keep it in a different text file, or PRINT to send it to your printer. Each time you click on OUTPUT, *GOwin* will place the new information at the bottom of the existing LABEL.TXT file. If the LABEL.TXT file still exists when you exit *GOwin*, the program will ask if you want to delete the file. If you answer "No," then *GOwin* will continue adding to the file the next time you run *GOwin*.

Web Linking

If the QSL destination doesn't appear in the *GOwin* window, you can click the GOSEARCH button and get the latest information from the www.golist.net Web service (Figure 2).

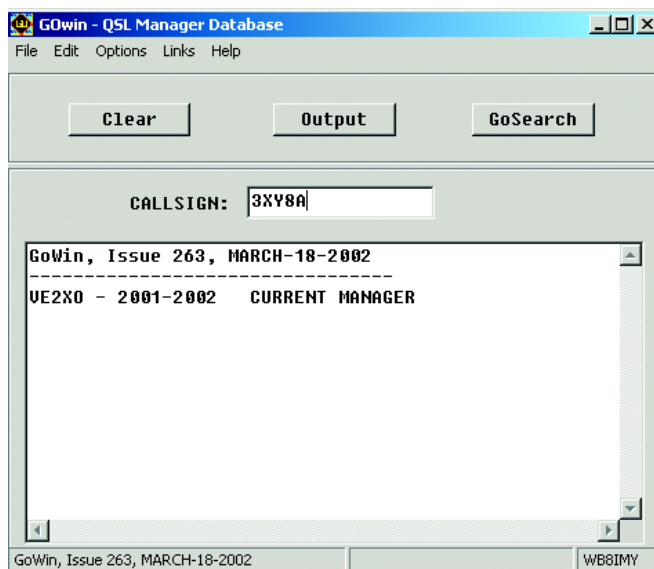


Figure 1—In this example, I entered 3XY8A. In a fraction of a second *GOwin* informed me that I needed to send my card to VE2XO (the operator's home call).

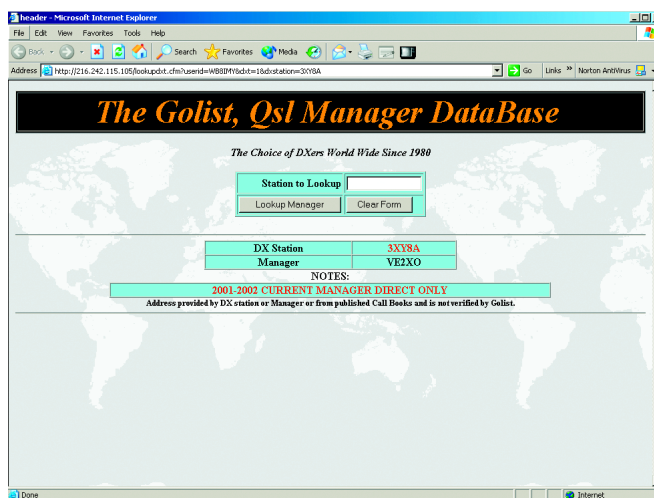


Figure 2—If *GOwin* doesn't have the answer, just click on the GOSEARCH button. *GOwin* will automatically connect you to the GoList Web site and do a rapid search.

GoSearch may contain information on DX stations that do not appear in the weekly GoList database updates.

Conclusion

You can order your own copy of *GOwin* online at golist.net/ for \$49.95. The cost includes a year of weekly updates and a subscription to *DX Alert*, a weekly listing of published DX operations. Once you make the purchase, *GOwin* can be sent to you electronically as an e-mail attachment, or by mail on a CD-ROM (add \$5 for CD shipping; add \$5 for international shipping).

Manufacturer: *The GoList*, PO Box 3071, Paris, TN 38242; tel 731-641-4354; golist@golist.net. 